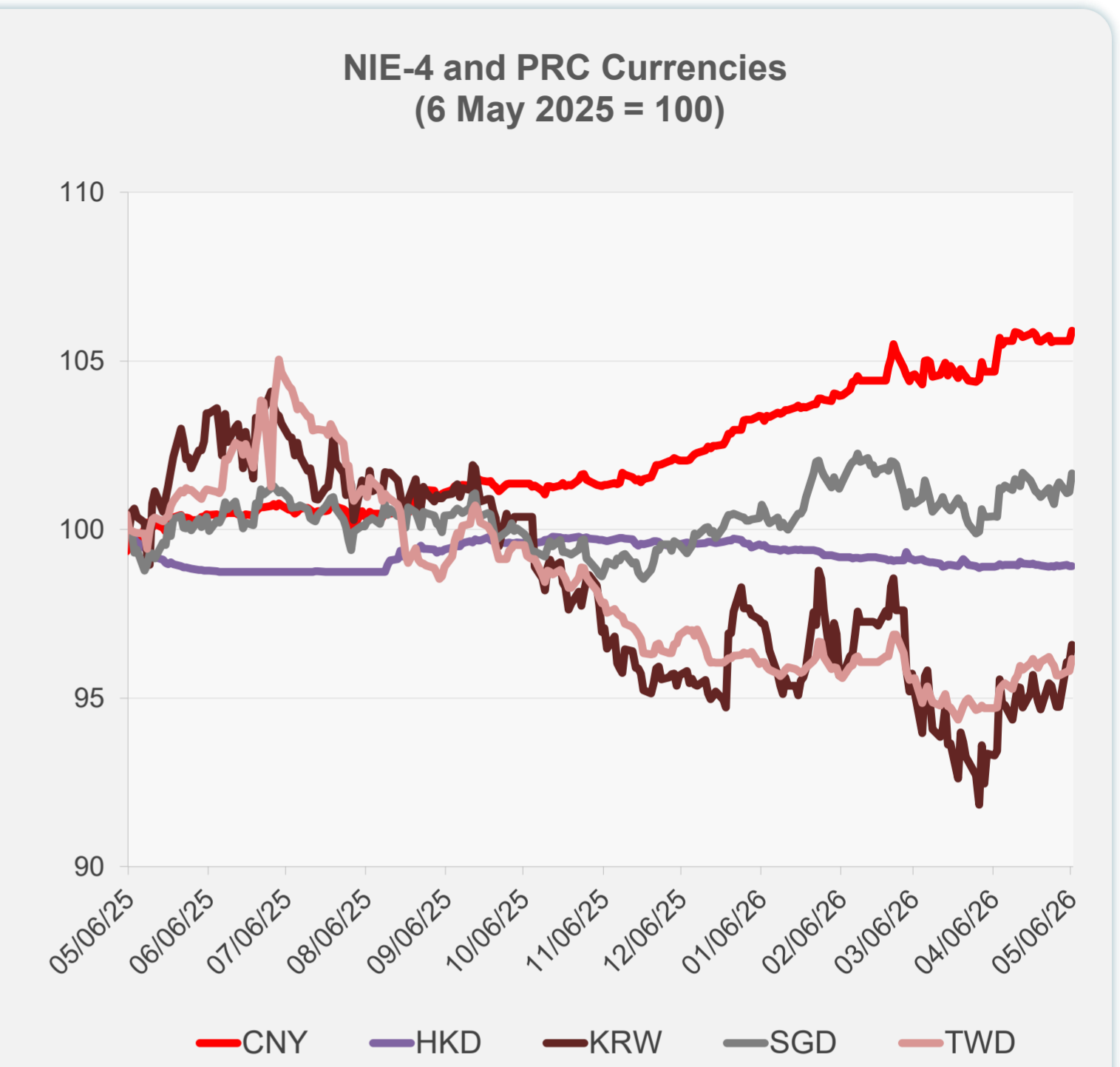
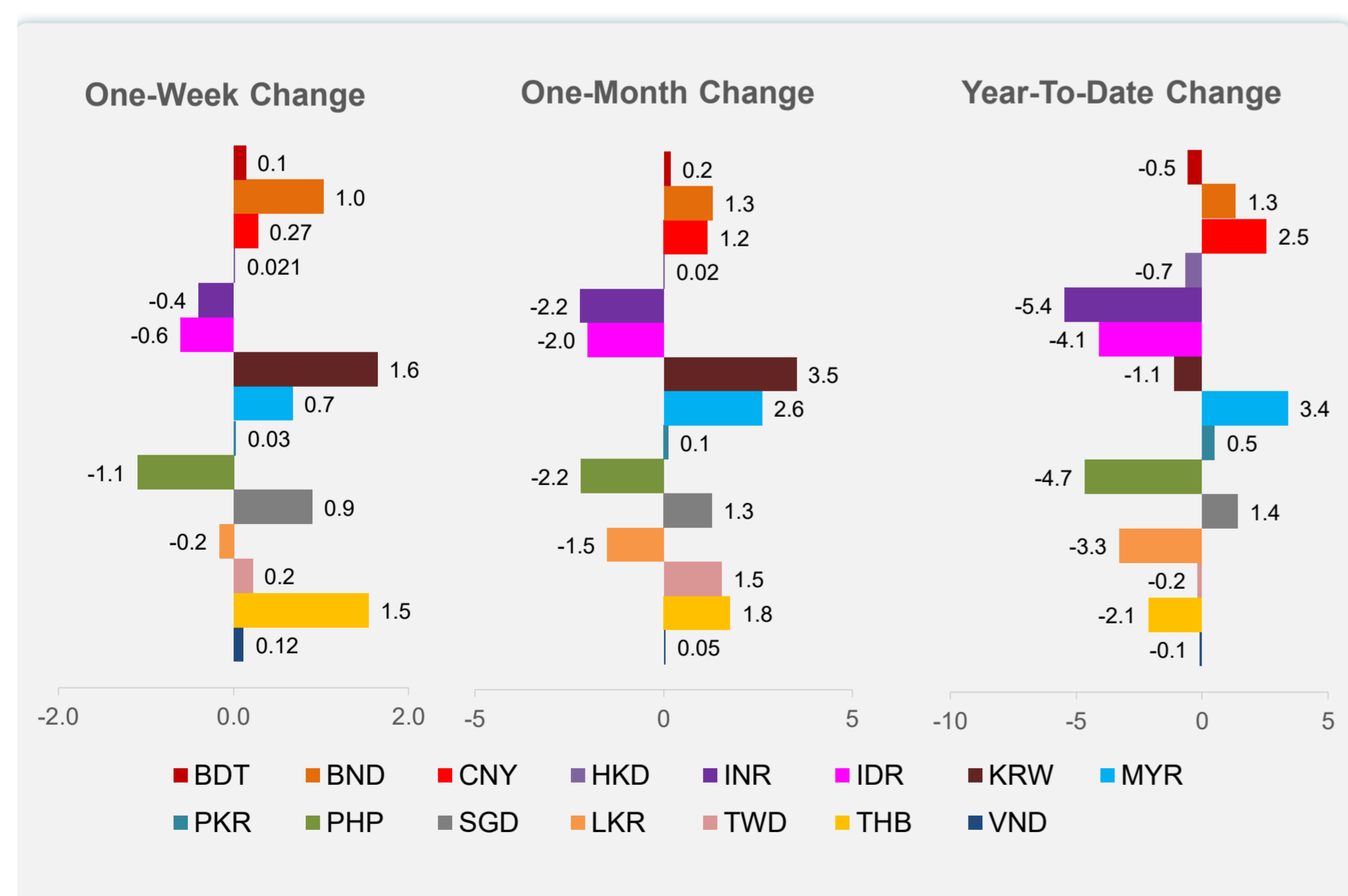
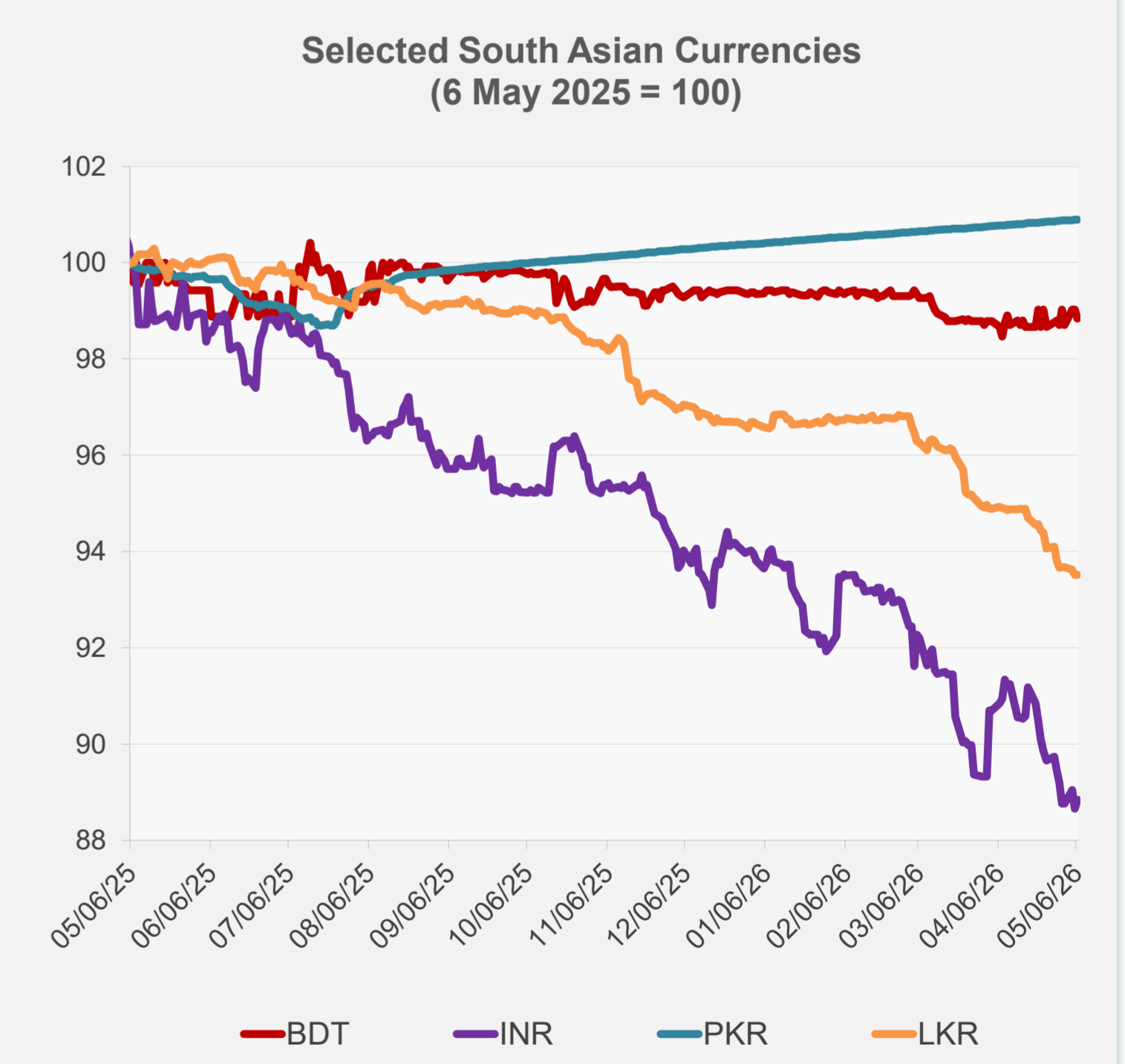


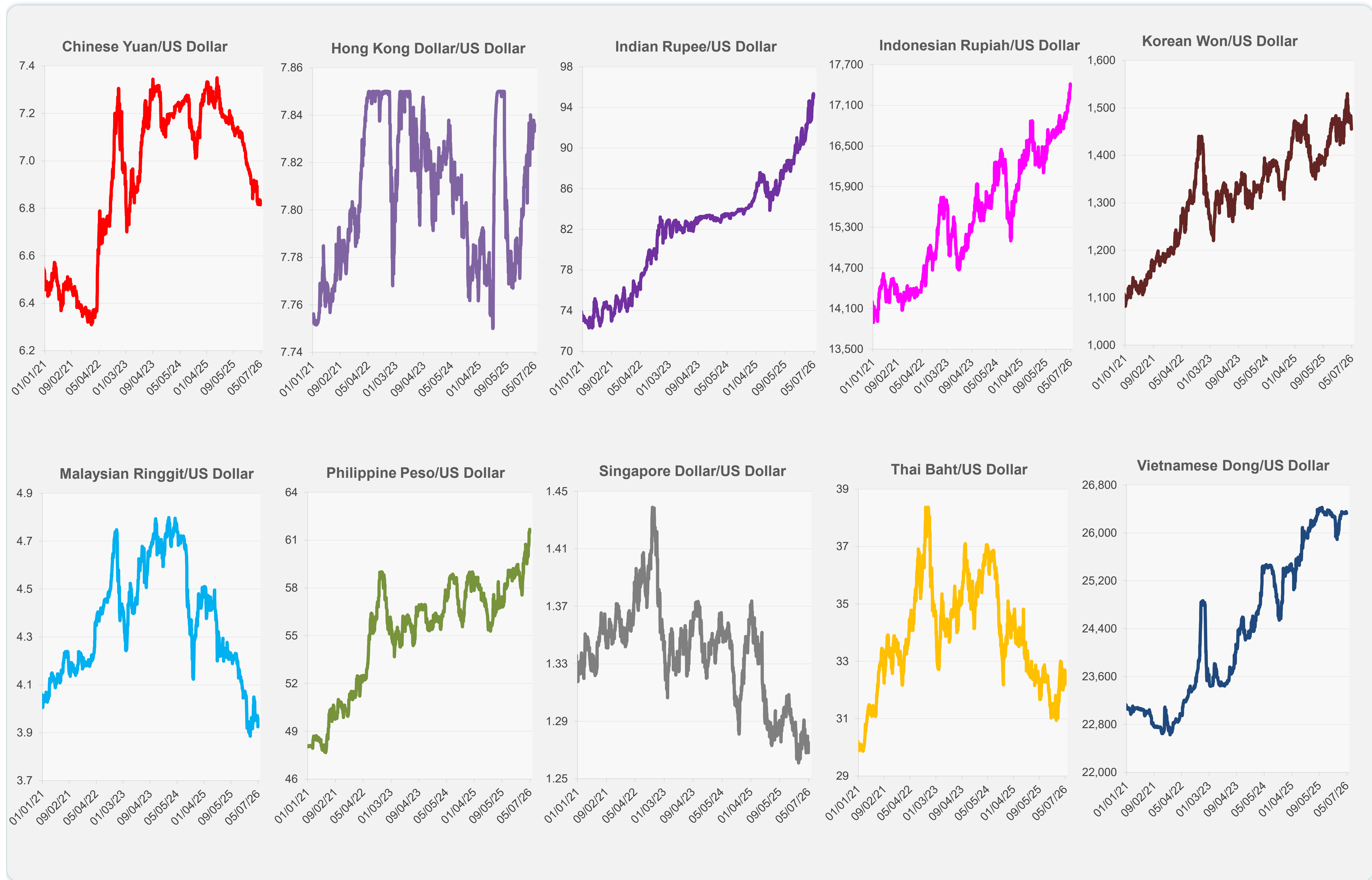
	Latest Closing	% change from Previous Day	% change from 01-Jan-26
Euro	0.85	0.44	0.10
Japanese yen (JPY)	156.62	0.00	-0.41
Bangladeshi taka (BDT)	122.93	-0.18	-0.55
Brunei dollar (BND)	1.27	0.56	1.32
Chinese yuan (CNY)	6.81	0.28	2.55
Hong Kong dollar (HKD)	7.84	0.01	-0.66
Indian rupee (INR)	95.16	0.21	-5.45
Indonesian rupiah (IDR)	17,385.00	0.17	-4.08
Korean won (KRW)	1,455.10	0.53	-1.11
Malaysian ringgit (MYR)	3.93	0.94	3.39
Pakistan rupee (PKR)	278.70	0.01	0.50
Philippine peso (PHP)	61.68	-0.37	-4.66
Singapore dollar (SGD)	1.27	0.56	1.41
Sri Lanka rupee (LKR)	320.13	-0.01	-3.29
Taipei,China NT dollar (TWD)	31.49	0.37	-0.16
Thai baht (THB)	32.19	1.58	-2.14
Vietnamese dong (VND)	26,325.00	0.03	-0.09



NIE = Newly Industrialized Economies



Note: Negative/Decreasing values indicate depreciation of local currency, and positive/increasing values indicate appreciation.  
Source: ADB calculations using data from Bloomberg and Haver Analytics.

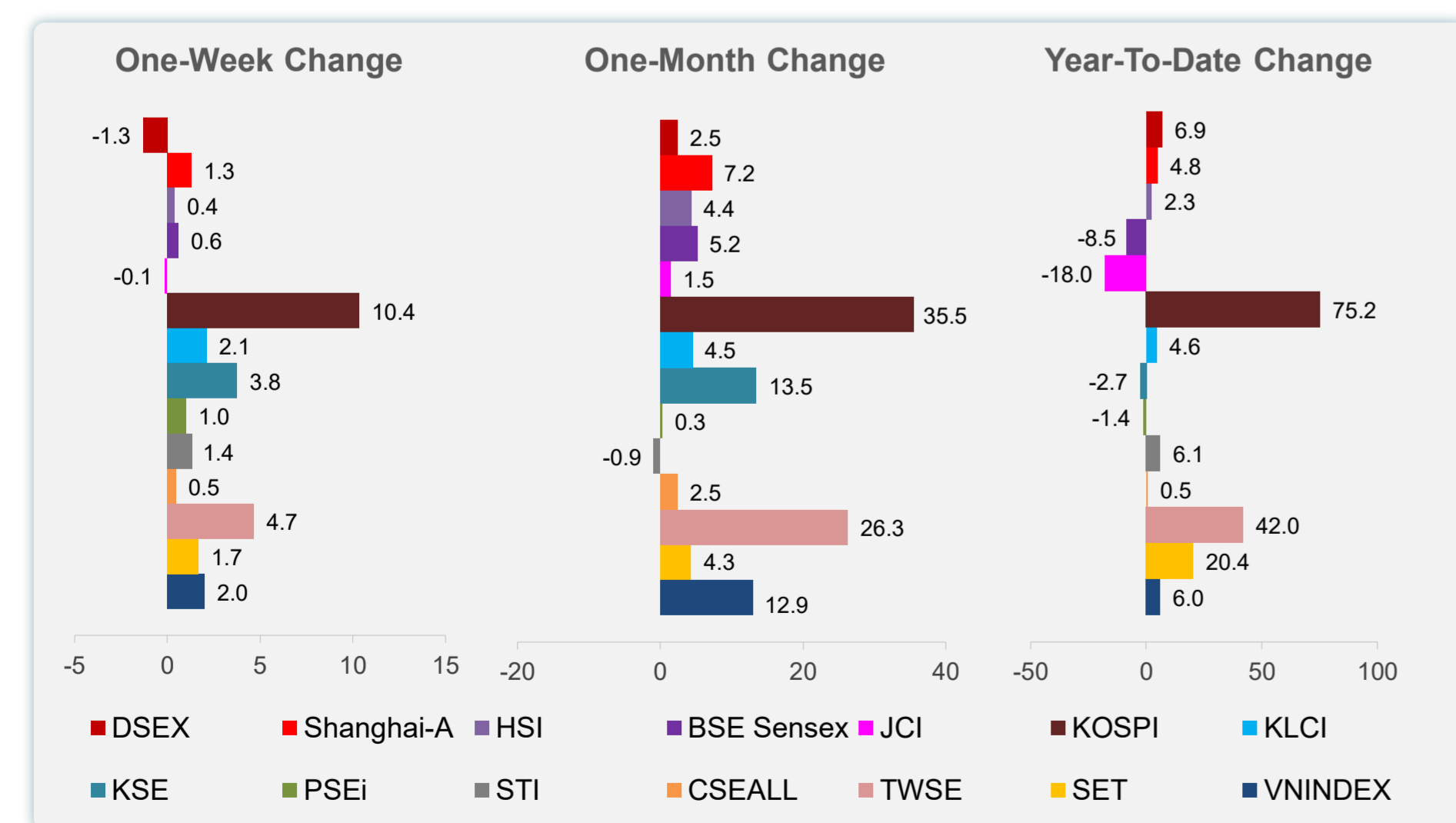
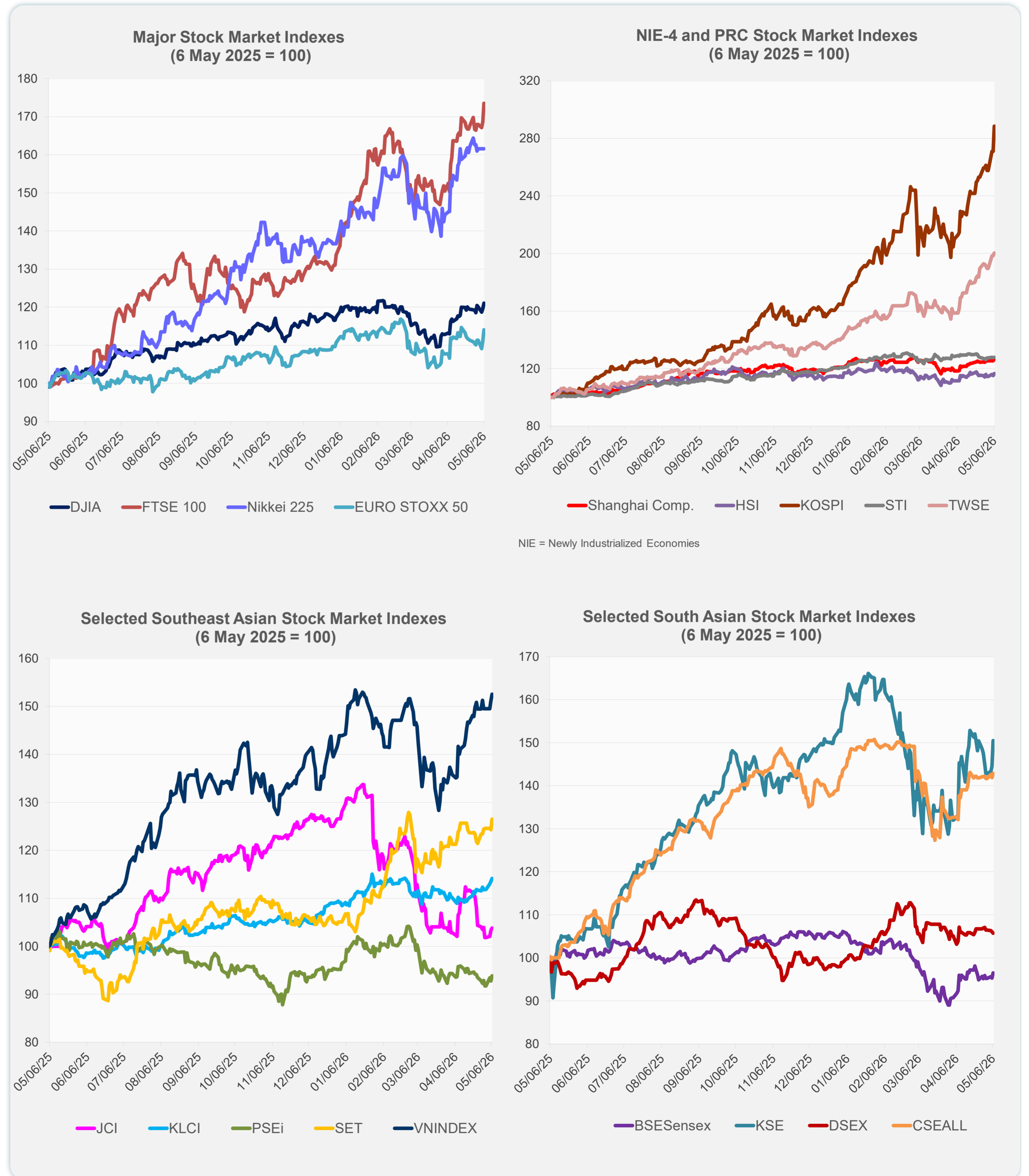


Source: Haver Analytics.

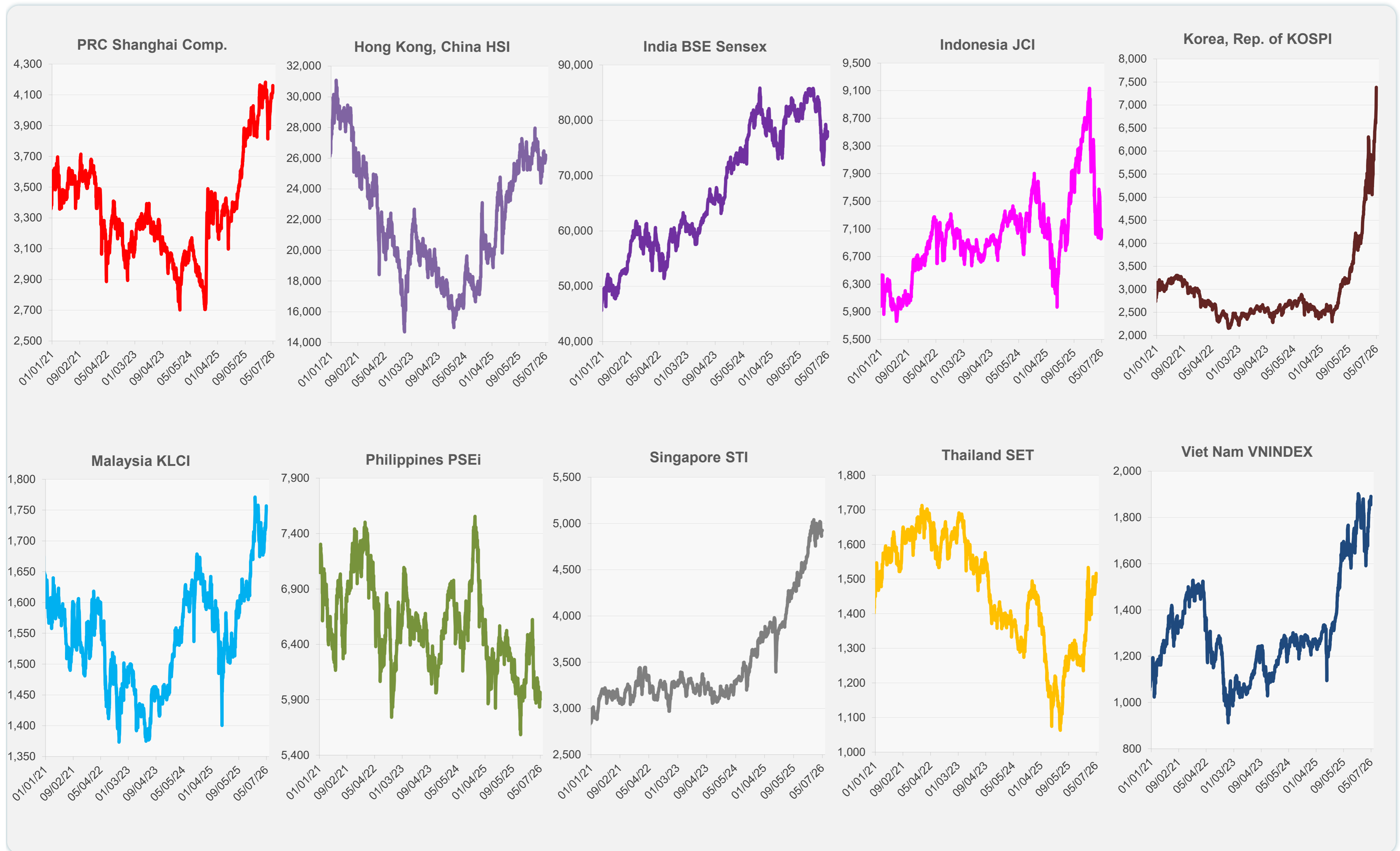
Daily Market Watch  
**STOCK INDEXES**

7 May 2026, 9:00 AM Manila

	Latest Closing	% change from Previous Day	% change from 01-Jan-26
US Dow Jones Ind Avg	49,910.59	1.24	3.84
US NASDAQ	25,838.94	2.02	11.17
US S&P 500	7,365.12	1.46	7.59
UK FTSE 100	14,917.43	2.91	32.46
EURO STOXX 50	6,027.13	2.68	4.07
Japan NIKKEI 225	59,513.12	0.00	18.22
Bangladesh DSEX	5,248.37	-0.36	6.88
PRC Shanghai Comp.	4,160.17	1.17	4.82
Hong Kong, China HSI	26,213.78	1.22	2.28
India BSE Sensex	77,958.52	1.22	-8.49
Indonesia JCI	7,092.47	0.50	-17.98
Korea, Rep. of KOSPI	7,384.56	6.45	75.23
Malaysia KLCI	1,756.87	0.54	4.57
Pakistan KSE 100	171,723.20	4.16	-2.69
Philippines PSEi	5,967.21	1.17	-1.42
Singapore STI	4,927.38	0.14	6.05
Sri Lanka CSEALL	22,739.77	0.69	0.51
Taipei, China TWSE	41,138.85	0.91	42.04
Thailand SET	1,516.91	1.80	20.42
Viet Nam VNINDEX	1,891.20	0.87	5.98



Sources: ADB calculations using data from Bloomberg and CEIC Data Company.



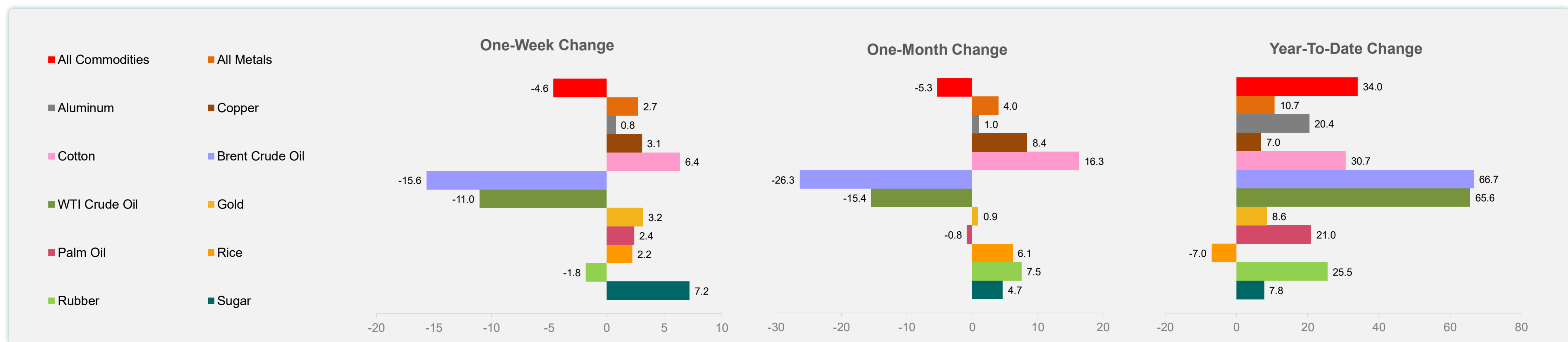
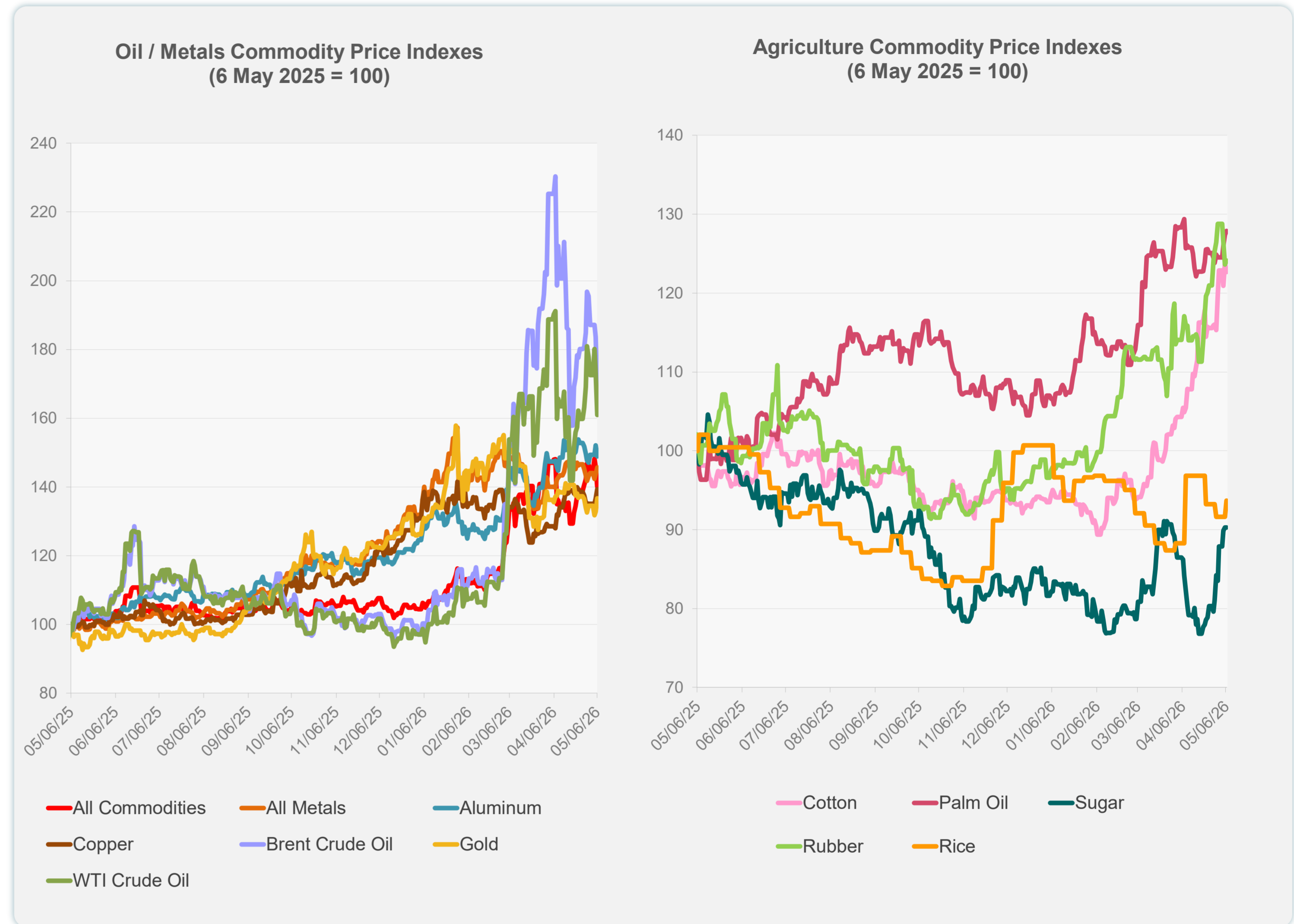
Sources: ADB calculations using data from Bloomberg and CEIC Data Company.

Daily Market Watch  
**COMMODITY PRICES**

	Unit	Latest Closing	% change from Previous Day	% change from 01-Jan-26
S&P All Commodities	US\$	735.10	-3.93	34.02
S&P All Metals	US\$	491.27	1.35	10.71
Aluminum	US\$/metric ton	3,574.60	-2.12	20.44
Copper	US\$/metric ton	13,319.94	2.00	6.96
Cotton	US cents/lb	81.05	-0.92	30.68
Brent Crude Oil	US\$/barrel	104.08	-9.61	66.67
WTI Crude Oil	US\$/barrel	95.08	-7.03	65.59
Gold	US\$/troy oz	4,691.36	2.95	8.61
Palm Oil	US\$/metric tonne	1,171.68	0.39	20.96
Rice <sup>1</sup>	US\$/metric ton	415.00	2.22	-6.95
Rubber <sup>2</sup>	US\$/kg	269.90	0.41	25.53
Sugar	US cents/lb	15.94	0.00	7.78

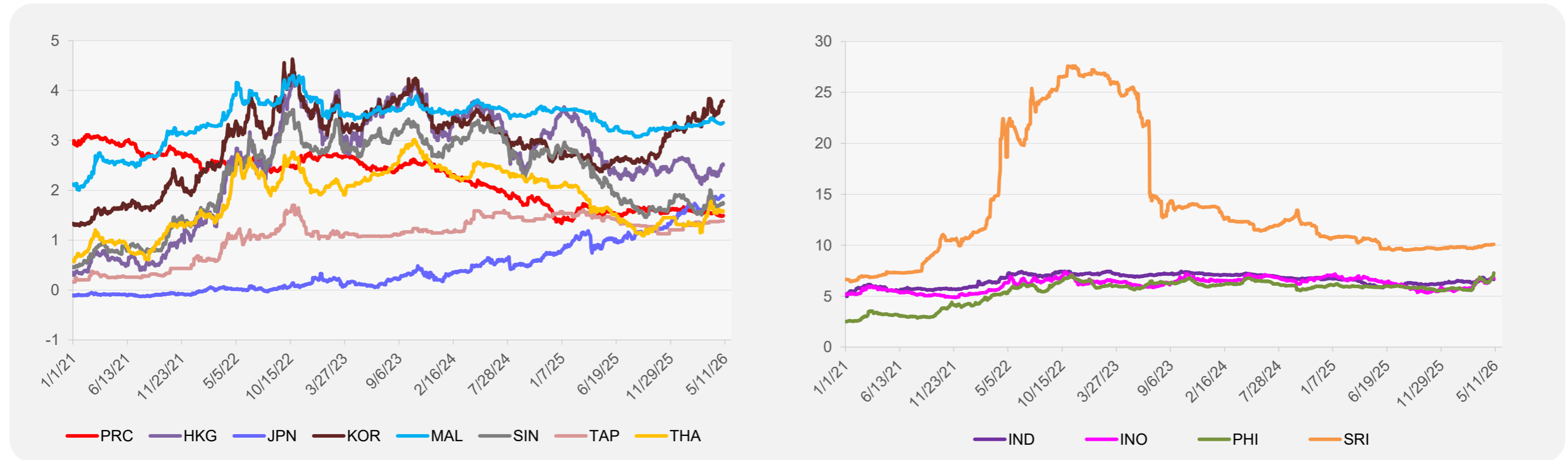
<sup>1</sup> Latest closing price from 6 May 2026.

<sup>2</sup> Singapore Exchange, Ribbed Smoked Sheet Rubber.

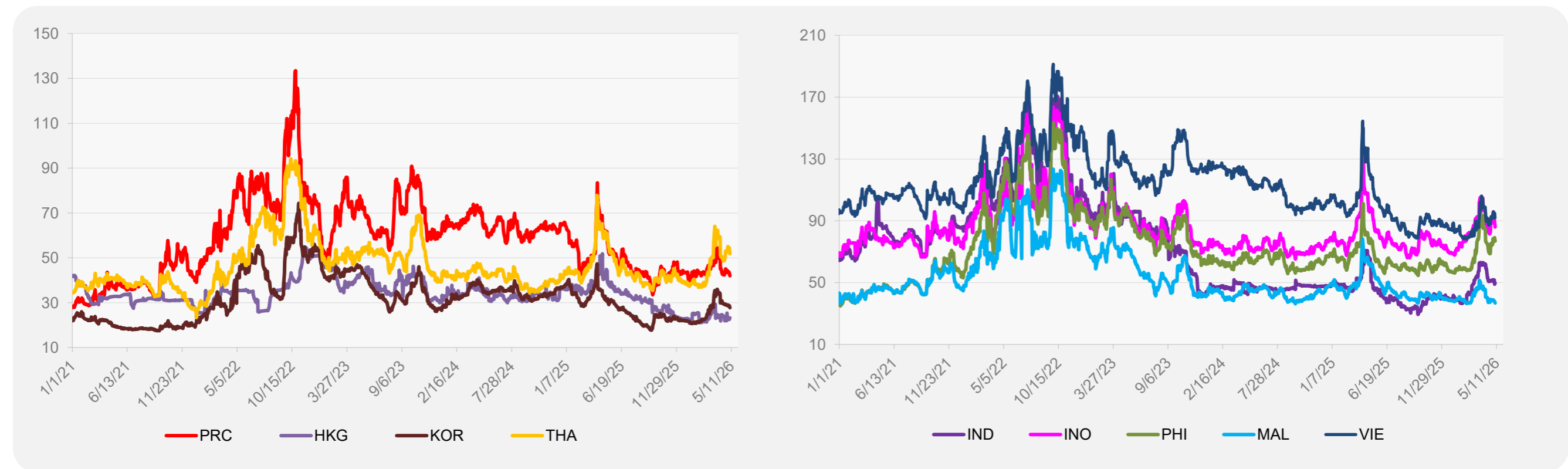


Source: ADB calculations using data from Bloomberg.

### 5-YEAR LOCAL CURRENCY GOVERNMENT BOND YIELDS (%)



### 5-YEAR CREDIT DEFAULT SWAP<sup>1</sup>



<sup>1</sup> In USD and based on sovereign bonds.  
Source: ADB calculations using data from Bloomberg.